

Energy Storage Series

E50,E70 Energy Storage Waterproof Connectors



Product Description

This product complies with international standards such as UL, TUV, and RoHS in terms of technical performance; the male and female ends are securely locked with a press-fit latch design, offering the advantages of safe and firm locking, smooth plugging and unplugging, with more than 500 repeat plugging and unplugging cycles; the shell is made of PA66+GF material, ensuring stable electrical performance of the product, as well as excellent physical and chemical properties such as high-temperature resistance and corrosion resistance; at the same time, the conductive parts are processed with silver plating, ensuring excellent conductivity and meeting the product's temperature rise requirements even in high-temperature environments

This series of products offers a variety of models for users to choose from, including E50/E70. The appearance of the negative pole of this product is black, the appearance of the positive pole is orange, and red is also available for selection.

Applicable standards: Compliant with UL, TUV, RoHS, CE, and other standards.

Reference Standard:

UL4128 GBT11918.1-2014 GBT4208-2017 GBT35935.1 QC/T 417.1-2001

Materials and Finishes:

Electroconductive parts: Phosphor Bronze T2 , Beryllium Copper/Silver Plating

Housing: PA66+GF

Insulator: PA66+GF

Seal: Silicone

Spring: Stainless Steel SUS304

Electrical Characteristics :

Rated Voltage: 1500V DC

Rated Current : 50A/70A

Insulation Resistance : 500VDC/500M

Withstand Voltage (AC) : 7000VDC

Contact Resistance : $\leq 1\text{m}$

Mechanical Characteristics:

Mating Cycle Life: ≥ 500 次

Pin Retention Force: $\geq 300\text{N}$

Plug-Socket Retention Force: $\geq 150\text{N}$

Environmental Characteristics:

Operating Temperature: $-40^{\circ}\text{C} \sim +125^{\circ}\text{C}$

Protection Rating: IP67

Salt Spray Requirement: 72H

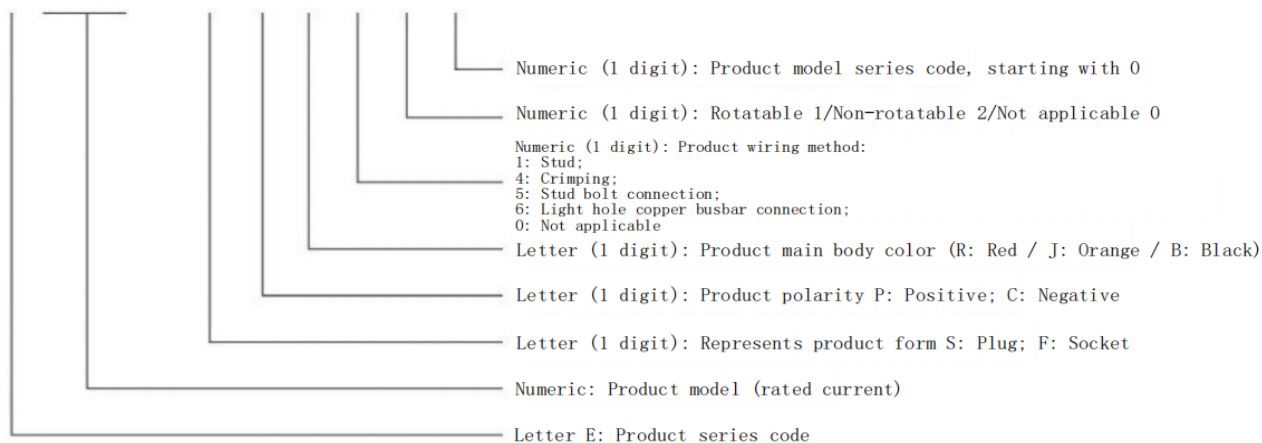
Altitude: 2000m Max

Connector Model and Cable Selection Table :

Product Series	Wire Gauge (mm ²)	Rated Current (A)
E50	6	50
E70	10	70

Nomenclature Rules:

E XXX - X X X X X X



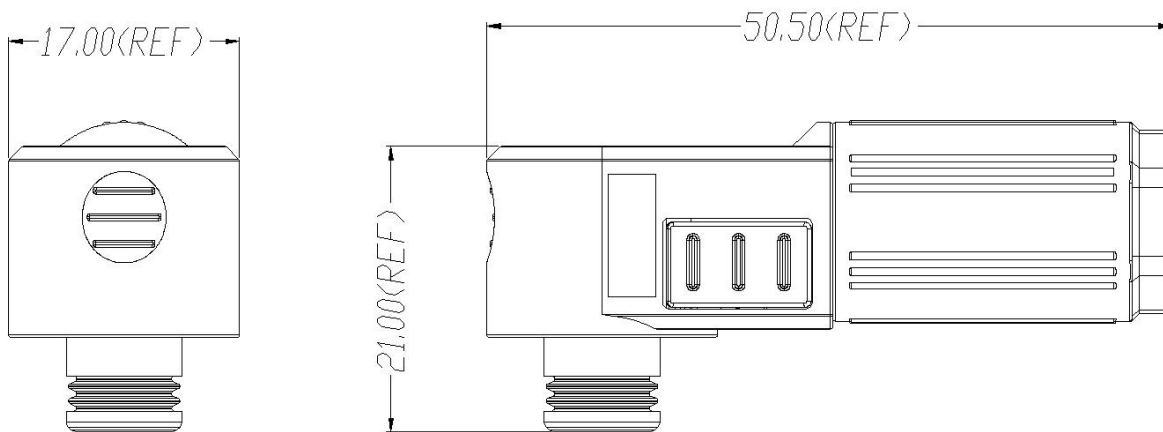
Installation Requirements:

The wire and plug end are connected using a riveting method, while the wire and socket end can adopt one of four methods: stud bolt, light hole copper busbar, crimping, or stud.

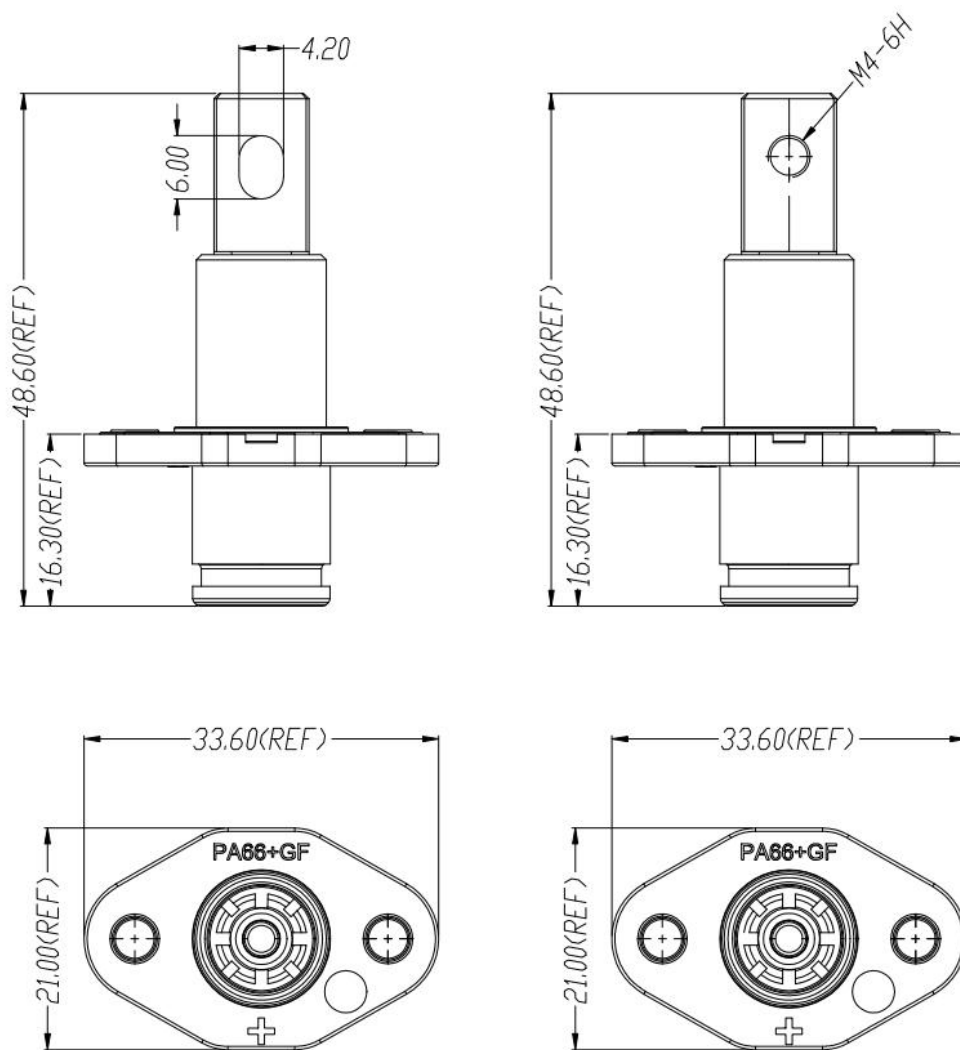
The riveting should be secure and free from looseness.

The product's external dimensions and mounting dimensions are as shown in the following figure.

E50/E70 Series Plug



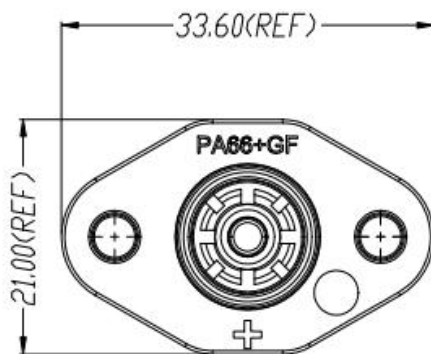
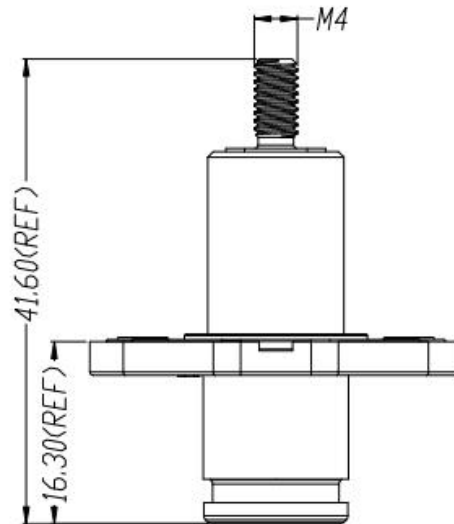
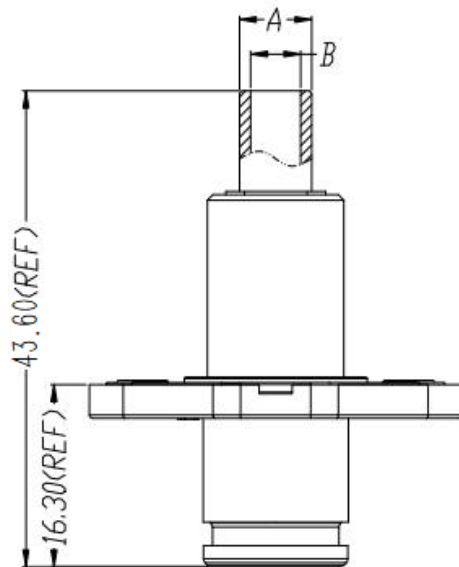
E50/E70 Series Socket



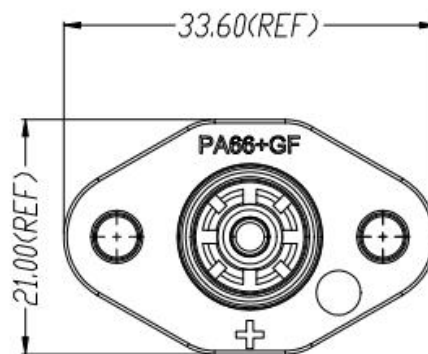
Light Hole Copper Busbar

Threaded Hole Copper Busbar

Product Series	Wire Cross-Sectional Area	Size (A)	Size (B)
E50	6mm ²	∅ 6	∅ 4
E70	10mm ²	∅ 7	∅ 5

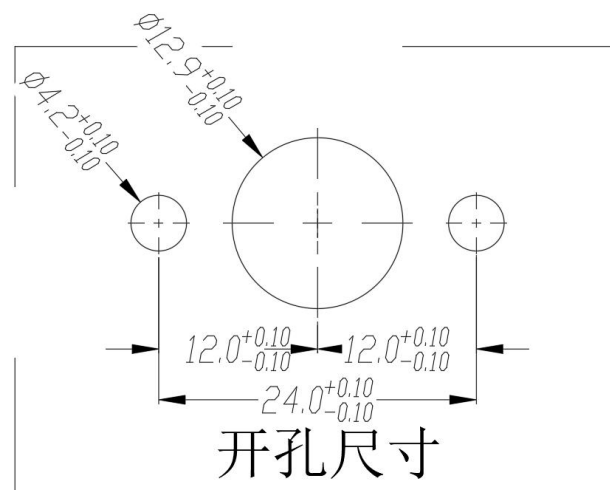


Crimping



Stud

Mounting Hole Dimensions :



Cutout Dimensions