

Energy Storage Series

150A, 200A, 250A Energy Storage Waterproof Connectors



Product Overview:

This product's technical performance complies with international standards such as UL, TUV, and RoHS; the male and female ends are secured with a press-fit latch design, which offers the advantages of secure locking, smooth plugging and unplugging, and can be repeatedly plugged and unplugged over 100 times; the housing is made of PA66+GF material, ensuring the product has stable electrical performance, as well as excellent physical and chemical properties such as high-temperature resistance and corrosion resistance; additionally, the conductive parts are processed with silver plating and tin plating, offering excellent conductivity and meeting the product's temperature rise requirements even in high-temperature environments.

This series of products offers a variety of models, providing options of 150A/200A/250A for users to choose from.

The negative pole of this product has a black appearance and the positive pole has an orange appearance, with red also available for selection.

Applicable standards: Compliant with UL, TUV, RoHS, CE, and other standards.

Reference Standards:

UL4128 GBT11918.1-2014 GBT4208-2017 GBT35935.1 QC/T 417.1-2001

Material and Finishes:

Conductive parts: Phosphor Bronze T2 / Silver Plated

Housing: PA66+GF

Insulator: PA66+GF

Seal: Silicone

Spring: Stainless Steel

Electrical Characteristics:

Rated Voltage: 1500V DC

Rated Current: 150A/200A/250A

Insulation Resistance: 500V DC/500M

Hi-pot Test Voltage: 7000V DC

Contact Resistance: $\leq 1\text{m}$

Mechanical Characteristics:

Number of Mating Cycles: ≥ 100 cycles

Male Contact Retention Force: $\geq 300\text{N}$

Plug-socket Retention Force: $\geq 150\text{N}$

Environmental Characteristics:

Operating Temperature: -40 to +125

Protection Rating: IP67

Salt Spray Requirement: 72 hours

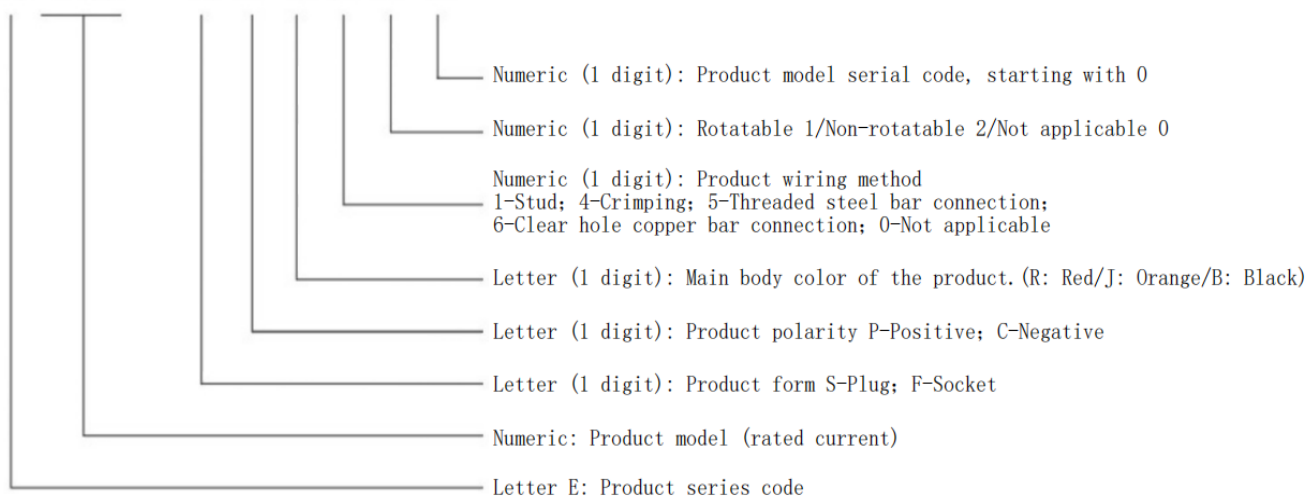
Altitude: Up to 2000m maximum

Connector Model and Cable Selection Table :

Product Series	Wire Gauge (mm ²)	Rated Current (A)
E150	35	150
E200	50	200
E250	70	250

Naming Conventions:

E XXX - X X X X X X

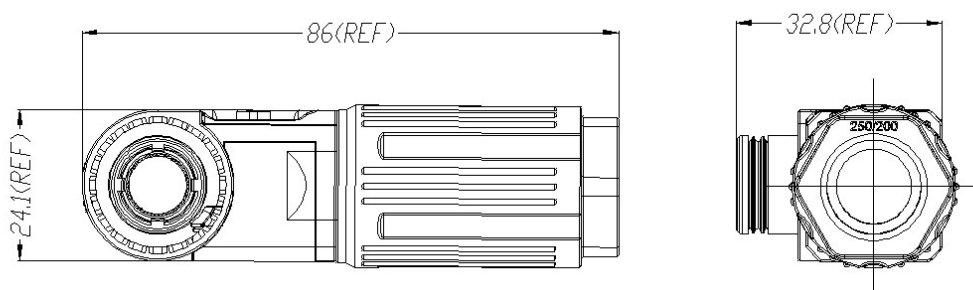


Installation Requirements:

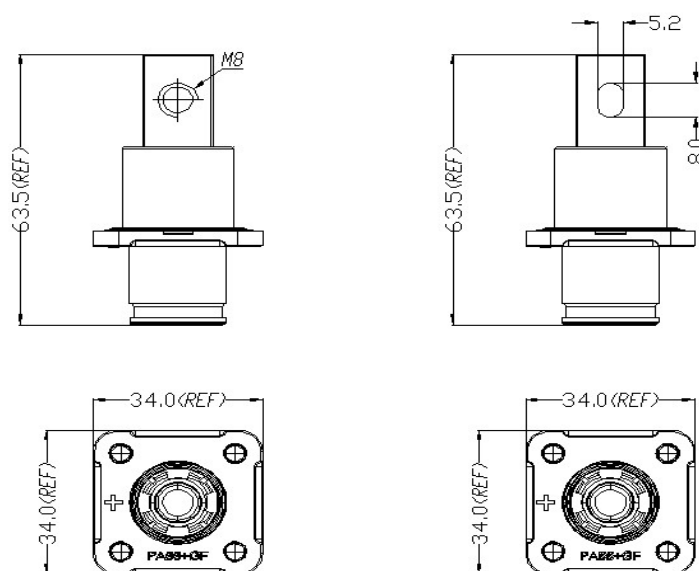
Wire and plug terminal are connected by riveting, and the wire and socket terminal are connected by four methods: countersunk copper bar, punched hole copper bar, crimping, and stud style; the riveting should be firm and not loose;

The product's external dimensions and installation dimensions are shown in the following figure.

E150/E200/E250 Series Plug:

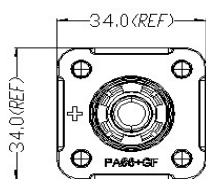
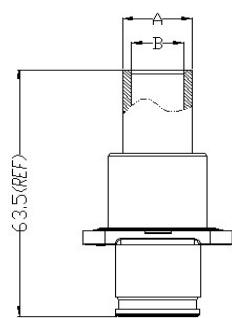


E150/E200/E250 Series Socket :

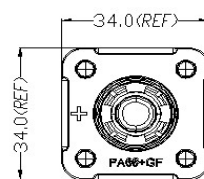
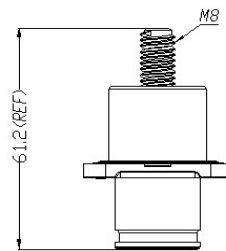


Screw Hole
Copper Bar Terminal

Through Hole
Copper Bar Terminal



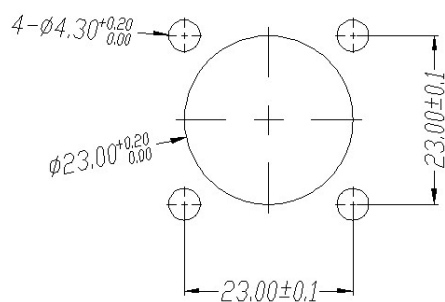
Crimping



Stud

Series	Wire Gauge (mm ²)	Size (A)	Size (B)
E150	35	∅ 12	∅ 9
E200	50	∅ 13	∅ 10
E250	70	∅ 16	∅ 12

Mounting Hole Dimensions:



安装孔尺寸